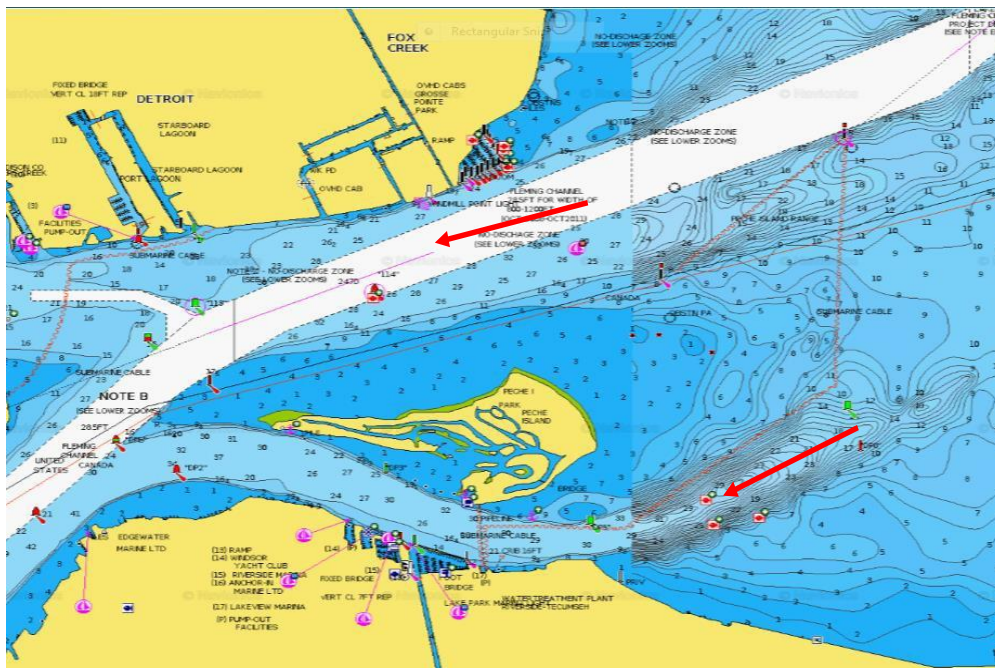
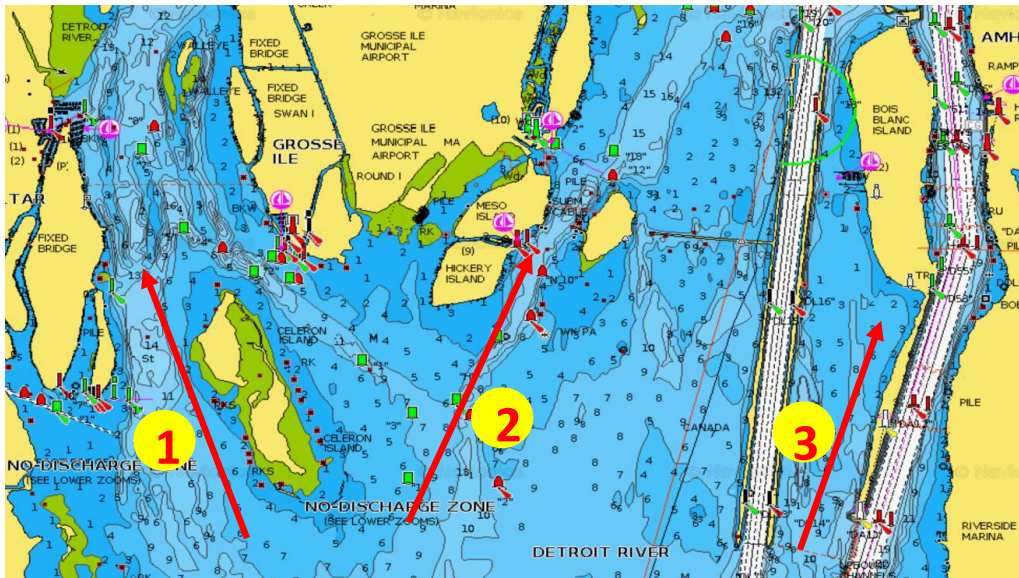


# DETROIT RIVER COURSE OUTLINE NOTES

## SEMINAR #1 PRE-SPAWN MIGRATIONS

- 1) Migrations from Lake St. Clair and Lake Erie will change yearly based on local weather conditions
- 2) Walleye winter in Erie and St. Clair and follow distinct routes into the river
- 3) Major migration routes are used at different times, by different groups of fish
- 4) Migration routes will determine where walleye end up as they move upstream



## SEMINAR #2 ERIE CHANGES AFFECTING WALLEYE MIGRATIONS

- 1) How are warmer winters affecting walleye movements from Lake Erie
- 2) Changes that are affecting walleye movements from Lake Erie
- 3) How those changes have a direct effect on migration routes and timing
- 4) How warmer winters are changing bait and algae in Erie

# Overview

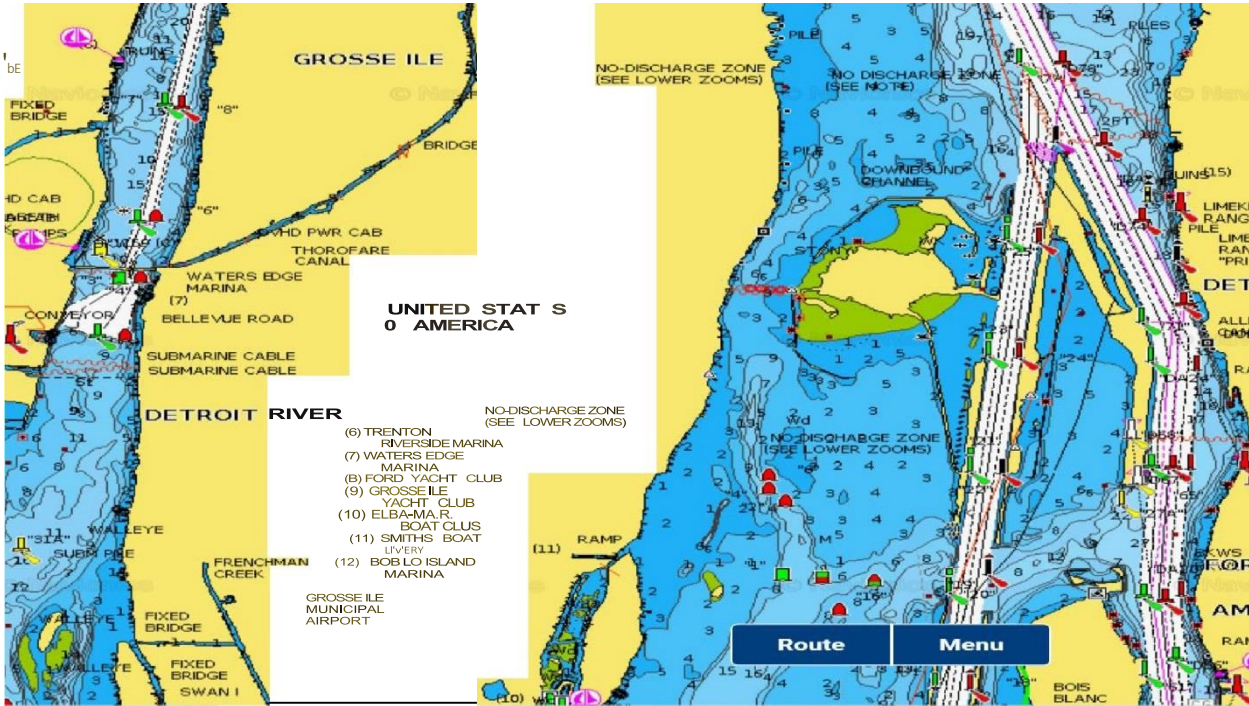
## CHANGES IN FISH MOVEMENT

1. WHERE DO DETROIT RIVER WALLEYE SPEND WINTER?
2. HOW DO WARM WINTERS EFFECT THE FOOD CHAIN IN ERIE?
3. LESS FISH SPAWNING IN THE RIVER WITH WARMER WINTERS?
4. LACK OF WARM WATER DISCHARGE AND SPAWNING

*James Valentini*  
**SPORTFISHING**

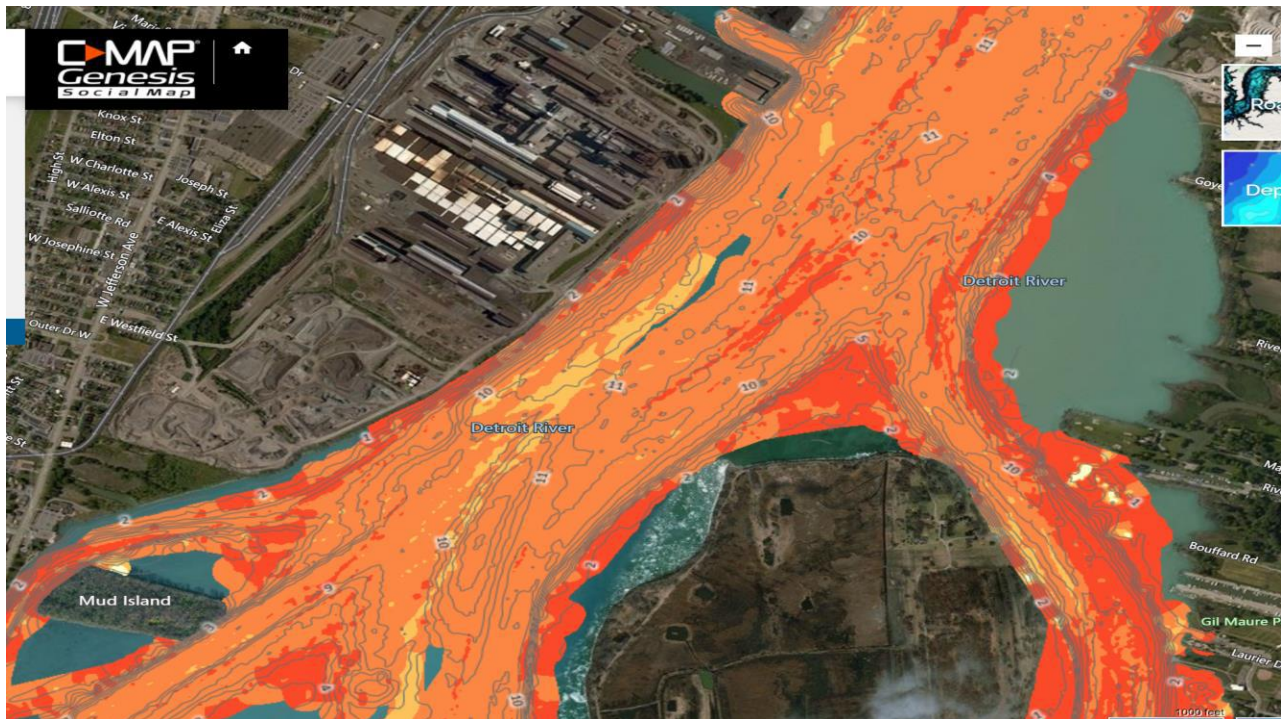
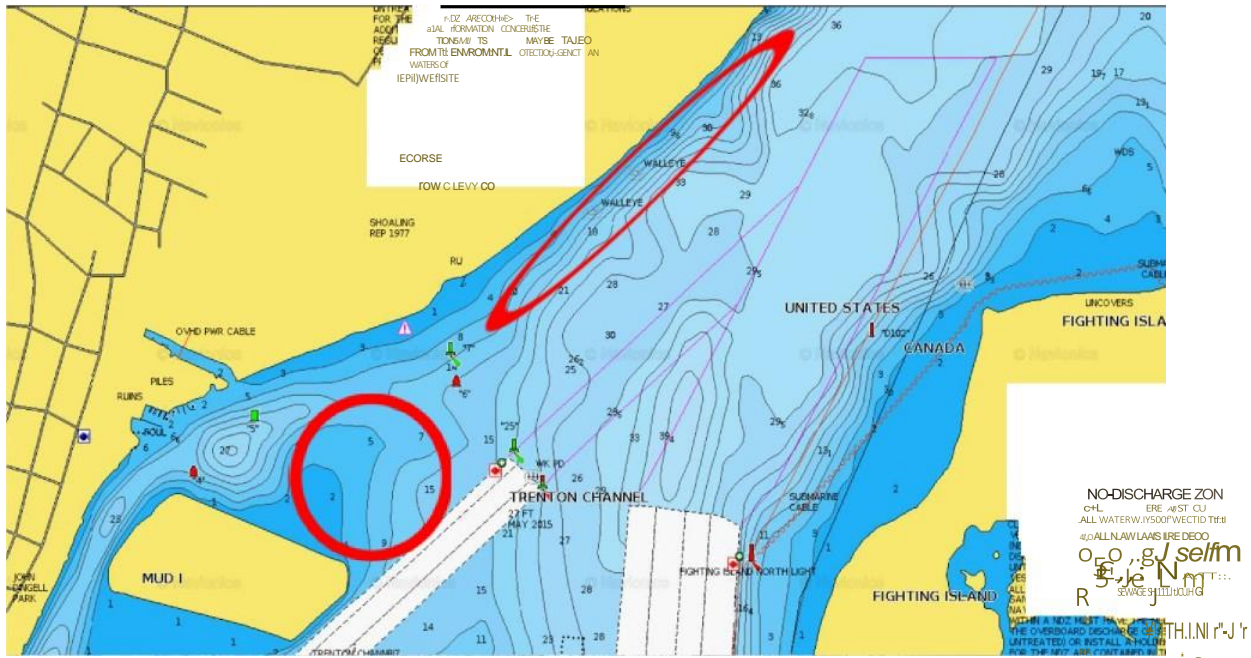
### SEMINAR #3 DETROIT RIVER PRE-SPAWN MOVEMENTS

- 1) Usually start under the ice
- 2) Movements can be major (up and down river) or minor (changing depths or bottom types)
- 3) Edges!!
- 4) Holding areas close to spawning areas



## SEMINAR #4 SPAWN LOCATIONS

- 1) Spawning happens in very distinct areas in many depths
- 2) Spawn areas may be shoreline areas or mid-river
- 3) Hard bottom, slack water, quick access to deeper water



- 1) Post-spawn dispersal is different in each part of the river and for each wave of fish
- 2) Flats are key areas
- 3) Fish will move or stay depending on weather and what the fish find for bait
- 4) Wisconsin study

# Dispersal

- **Most dispersal follows the same routes as entry into the river**
- **Fish will use edges to disperse, but SHALLOW edges are used as much as deep edges**
- **Fish may NOT return to the same place they came from!!**
- **BAIT!!!!**

## SEMINAR #6 POST-SPAWN DISPERSAL

- 1) Walleye may leave river right after spawning or may stay for a while
- 2) Walleye that enter from Erie may leave through St. Clair!
- 3) Current is a big factor
- 4) Understand difference between North bound dispersal and south bound dispersal

# **STRUCTURES AND PATHS**

## **POSSIBLE ROUTES OUT OF THE RIVER**

- 1. SIMILAR ROUTES ENTERING AND LEAVING**
- 2. FISH WILL "TAKE A BREAK" IN CERTAIN AREAS**
  - **REST, FEED**
  - **MORE VULNERABLE HERE**
  - **WHERE THEY STAGE MAY DICTATE ROUTES BACK INTO LAKE**
    - **LAKE ERIE AND ST. CLAIR**

- 1) Basis equipment and gear
- 2) Adjustments that have worked
- 3) Be versatile!!

# **PRESENTATIONS**

## **Adjustments**

- 1. LIGHTER JIGS (DOWN TO 3/8 OUNCE)**
- 2. SUBTLE JIG COLORS**
- 3. SMALLER BODIES**
- 4. CLEAR BODIES**
- 5. NOT VERTICAL-OFF THE BOTTOM**
- 6. VERY LITTLE MOVEMENT**

## SEMINAR #8 LANCE'S FAVORITE SPOTS

- 1) Find parts of the river with multiple location options in a small area
- 2) Focus on key areas
- 3) Learn a small section of the river each season

